



Lateral approach

MILA kit™ [REV.01]

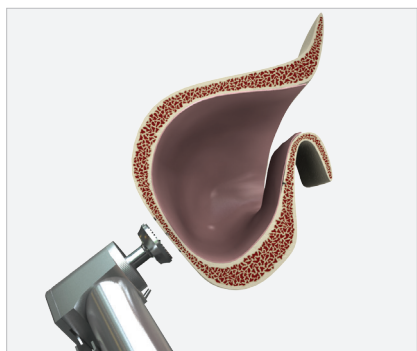
(MegaGen Implant Lateral Approach Kit)

Ref.C
KLSCN3000

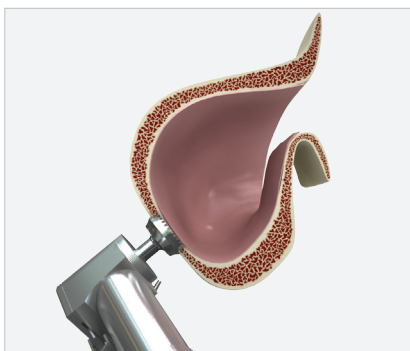
Drill safely with confidence!



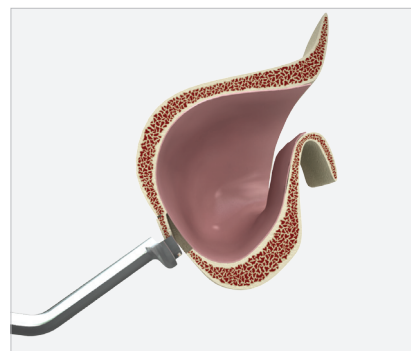
How to use – Lateral approach



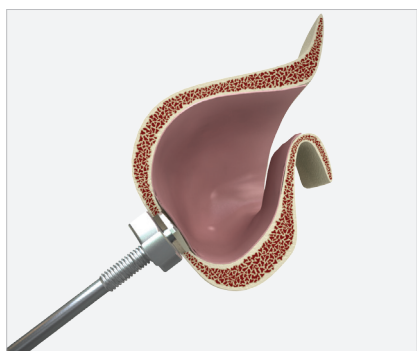
Identify the position to drill accurately using Point Trepine bur.



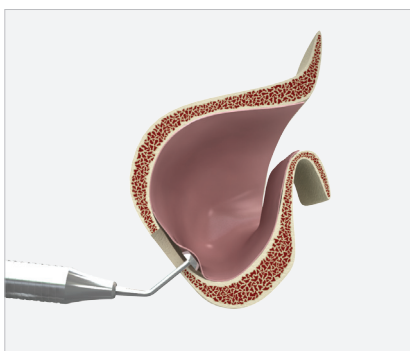
Choose Trepine depending on the thickness of the remaining bone and drill again over the hole made by Point Trepine bur.



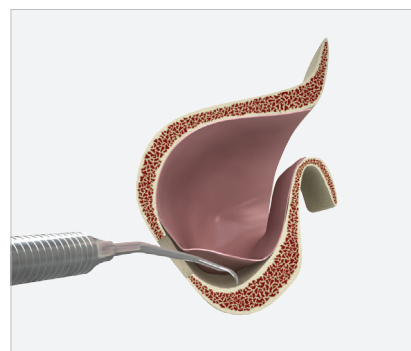
Use Window Opener to fracture and remove the window wall.



Completely remove the remaining window wall with Express Bur.



Use Elevator 001 through the hole to perform the first membrane lift.



Use Elevator 002 to lift the membrane further.



Graft autogenous bone collected or alloplastic material.



Close the window wall



Suture

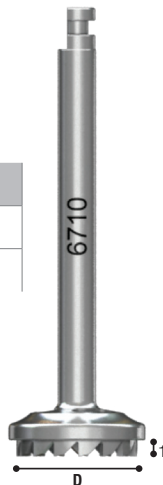
1. Point Trehine Bur | Scale 2:1

Diameter (D)	Length (mm)	Ref.C
Ø7.5	0.5	TLSTBU6705



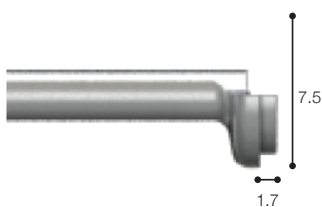
2. Lateral Trehine Bur | Scale 2:1

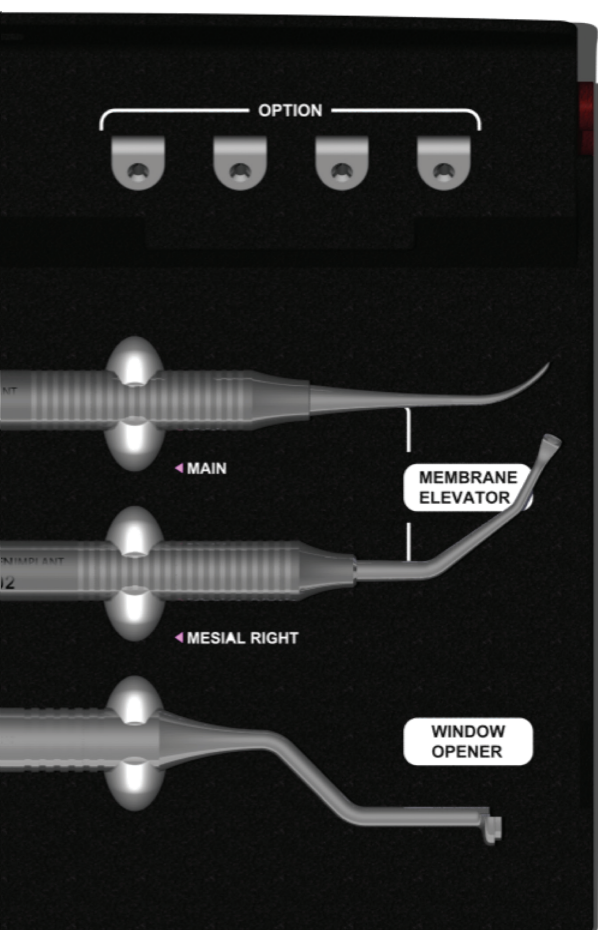
Diameter (D)	Length (mm)	Ref.C
Ø7.5	1	TLSTBU6710
Ø7.5	1.5	TLSTBU6715



3. Window Opener | Scale 2:1

Diameter (D)	Length (mm)	Ref.C
Ø7.5	1.7	TLSWO6710



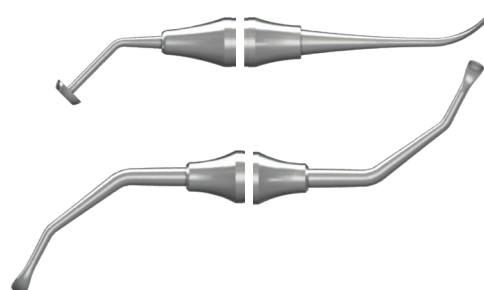


4. Express Bur | Scale 2:1

Diameter (D)	Length (mm)	Ref.C
Ø7.0	2/4/5/6/8/10 Marking	EB70

5. Membrane Elevator | Scale 1:1

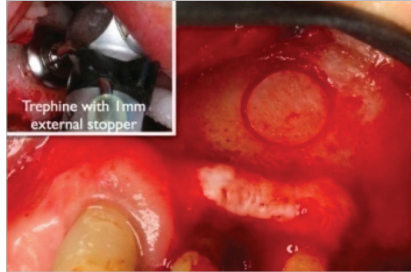
Diameter (D)	Length (mm)	Ref.C
Ø7.0, 3	-	TLSME001
2.8	-	TLSME002



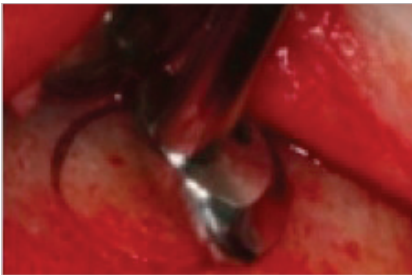
Clinical case



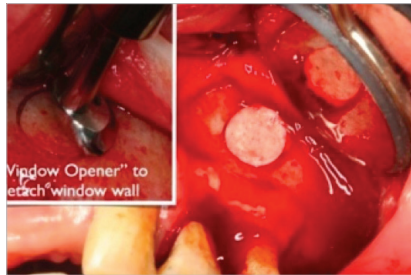
Trephine with 1mm external stopper



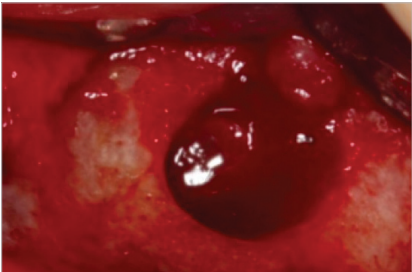
Point Trephine Bur : Initial drill



"Window Opener" to detach window wall



Window Opener : Remove the wall



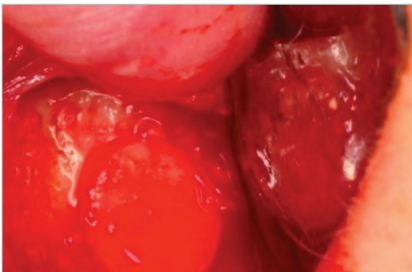
Elevator : Lift membrane.



Completely remove the remaining window wall with Express Bur



Graft : autogenous bone collected or alloplastic material



Previously detached window wall is tapped into the position to prevent soft tissue migration into the sinus bone grafting